

**INSTRUMENT
APPROACH
CHART - ICAO**

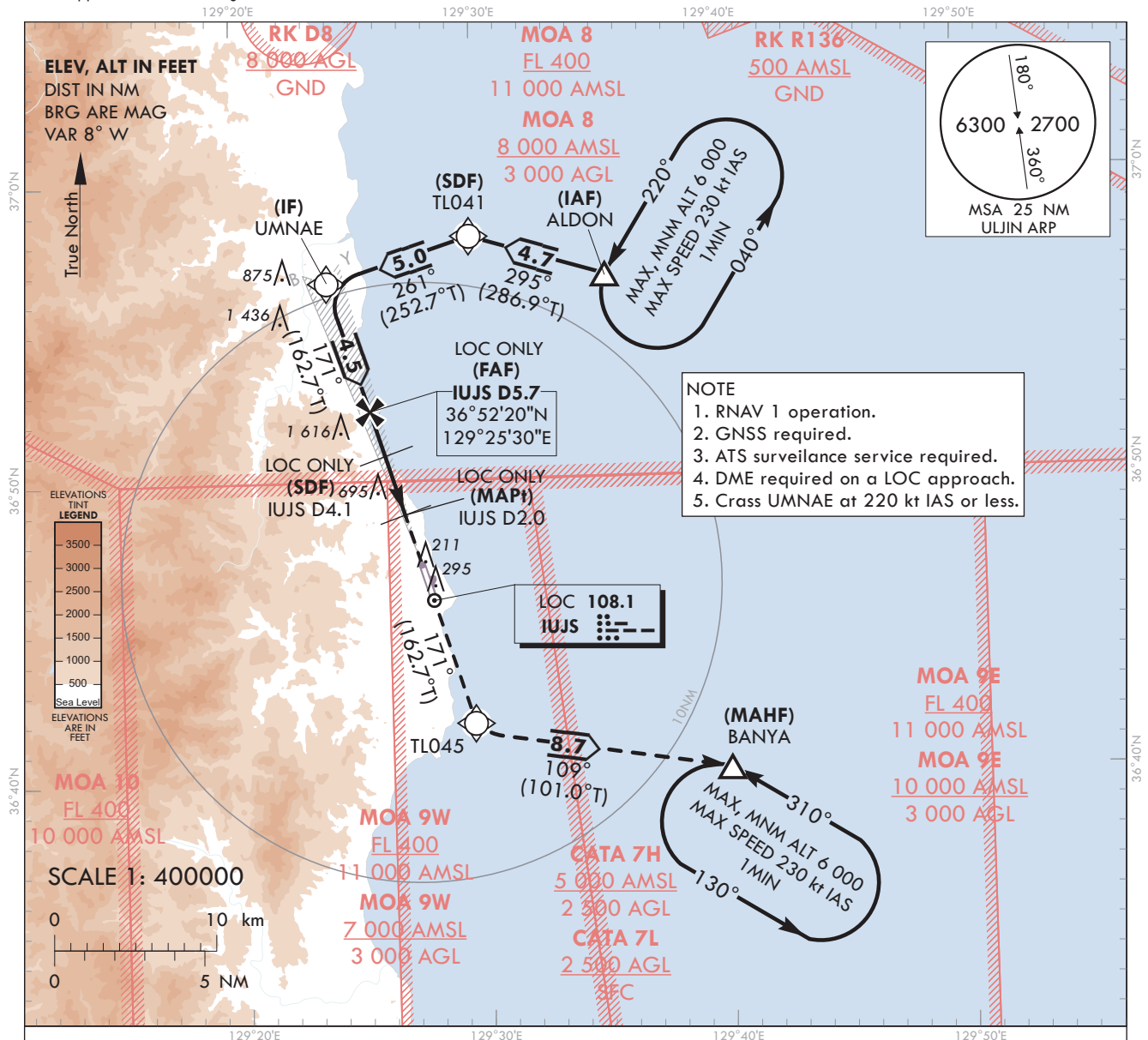
Note : Approach under ICAO Flight Procedures.

AERODROME ELEV 175 ft
HEIGHTS RELATED TO
THR RWY 17 - ELEV 175 ft

ULJIN	ARR	120.875
		317.65
ULJIN	TWR	118.55
		317.45

ULJIN/ULjin(RKTL)

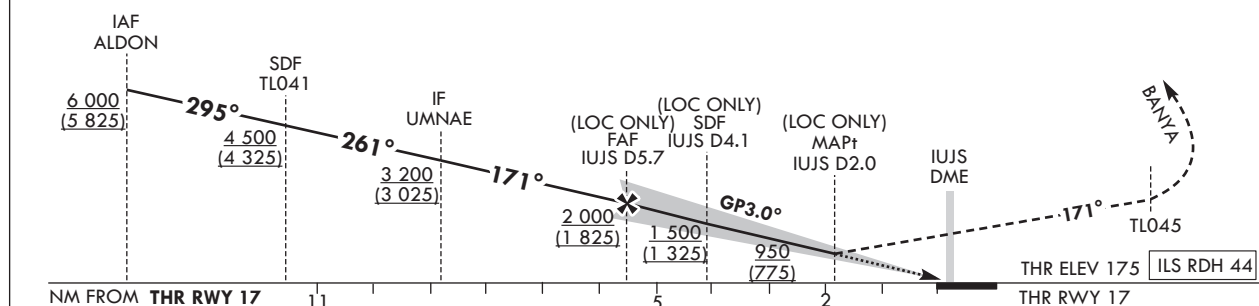
ILS Z or LOC Z RWY 17



RECOMMENDED PROFILE(LOC ONLY)	DME IUJS	5	4	3	2
Final Approach Gradient 5.31%, 323 ft/NM	ALT(HGT)	1 777 (1 602)	1 455 (1 280)	1 132 (957)	810 (635)
	TRANSITION ALT	14 000			
	TRANSITION LVL	FL 140			

MISSED APPROACH

Climb straight ahead until TL045 then turn left to BANYA and hold at 6 000 ft.



CATEGORY			DA(H)/MDA(H)	A	B	C	D							
STA	CAT-1	FULL	375 (200)	800 m			Rate of descent	Knots	60	90	120	150	180	
		ALS INOP		1 200 m				V/V fpm	323	485	646	808	970	
	LOC	FULL	950 (775)	3 200 m				* Timing NOT authorized for defining the MAPt.						
		ALS INOP		3 600 m				* Circling not authorized.						

Change : Improved clarity such as terrain.

ULJIN/Uijin(RKTL)
ILS Z or LOC Z RWY 17

AERONAUTICAL DATA TABULATION

ILS Z / LOC Z Approach to RWY 17 from ALDON(IAF)		
Fix/Point		Coordinates
ALDON(IAF)		36°56'46.3"N 129°35'23.0"E
TL041(SDF)		36°58'07.9"N 129°29'46.5"E
UMNAE(IF)	BRG 170.91° / 10.3 NM IUJS	36°56'38.6"N 129°23'49.1"E
D5.7 IUJS(FAF)	BRG 170.93° / 5.7 NM IUJS	36°52'20.0"N 129°25'29.6"E
D4.1 IUJS(SDF LOC Only)	BRG 170.95° / 4.1 NM IUJS	36°50'50.7"N 129°26'04.2"E
D2.0 IUJS(MAPt LOC Only)	BRG 170.95° / 2.0 NM IUJS	36°48'50.3"N 129°26'50.9"E
THR RWY 17	Final approach descent angle(LOC ONLY) 3.03° (FAF-SDF) / 3.05° (SDF-THR)	36°47'05.09"N 129°27'31.62"E
UJN VORTAC		36°46'35.2"N 129°27'26.9"E
TL045		36°41'52.3"N 129°29'32.6"E
BANYA		36°40'12.4"N 129°40'05.8"E

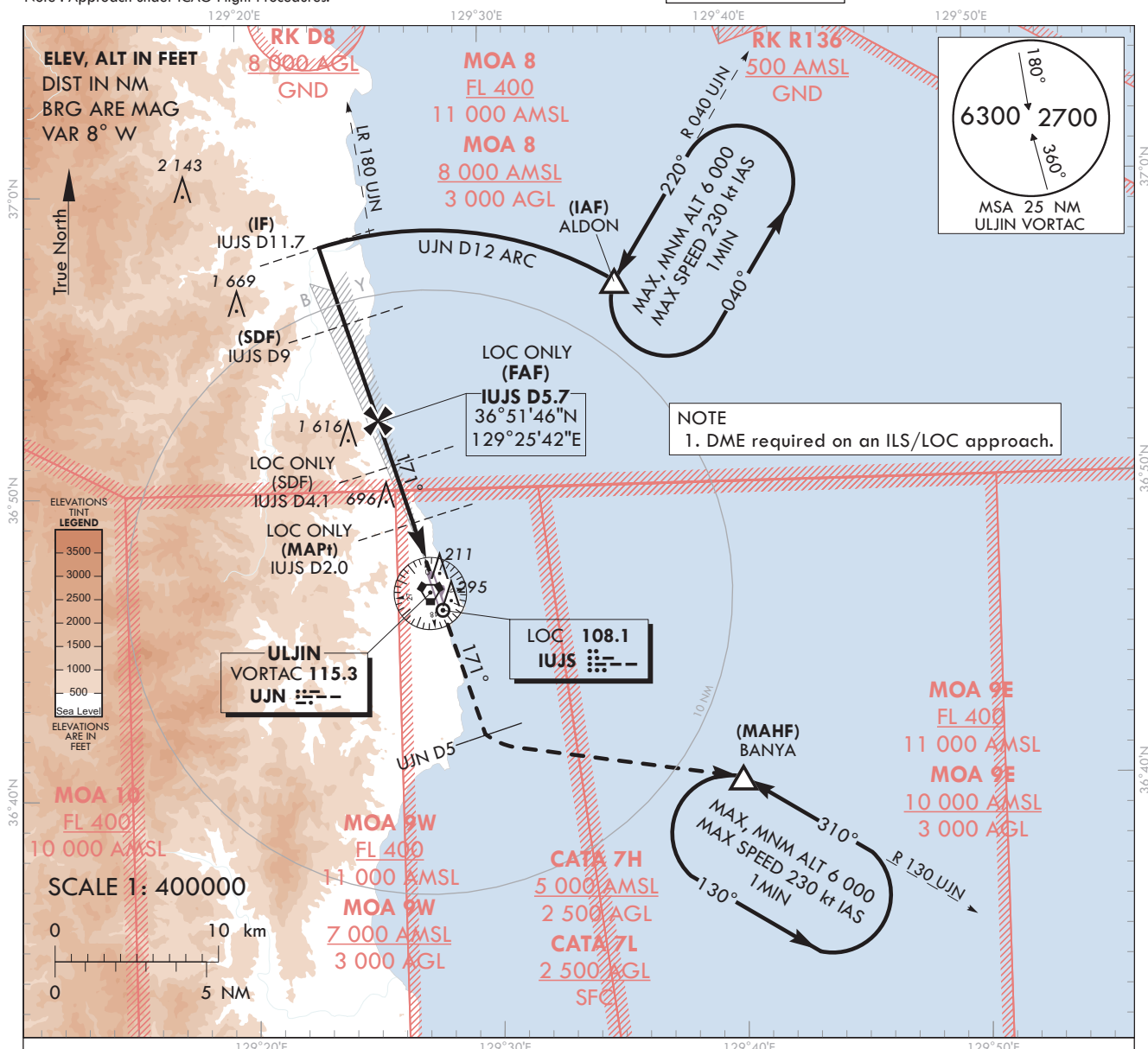
AERODROME ELEV 175 ft
HEIGHTS RELATED TO
THR RWY 17 - ELEV **175 ft**

Note : Approach under ICAO Flight Procedures.

ULJIN	ARR	120.875
		317.65
ULJIN	TWR	118.55
		317.45

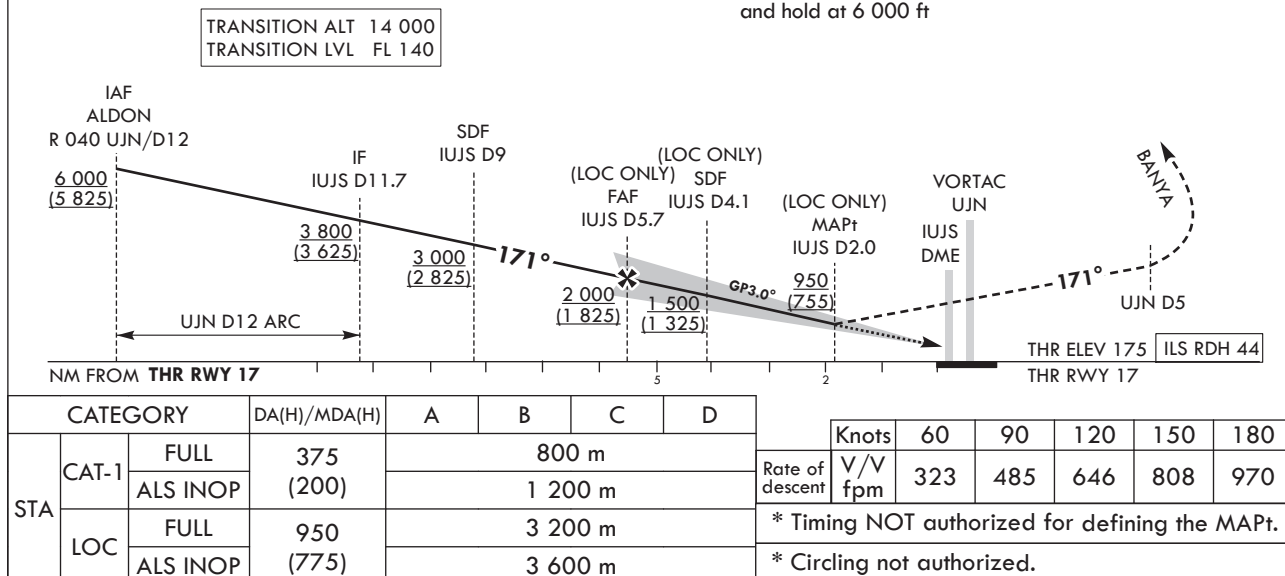
ULJIN/ULjin(RKTL)

ILS Y or LOC Y RWY 17



RECOMMENDED PROFILE(LOC ONLY)	DME IUJS	5	4	3	2
Final Approach Gradient 5.31%, 323 ft/NM	ALT(HGT)	1 777 (1 602)	1 455 (1 280)	1 132 (957)	810 (635)

Climb straight ahead until UJN D5 then turn left to BANYA and hold at 6 000 ft



Change : Improved clarity such as terrain.				

ULJIN/Uijin(RKTL)
ILS Y or LOC Y RWY 17

AERONAUTICAL DATA TABULATION

ILS Y / LOC Y Approach to RWY 17 from ALDON(IAF)		
	Fix/Point	Coordinates
ALDON(IAF)	R 040 UJN/ 12.00 NM UJN	36°56'46.3"N 129°35'23.0"E
D11.7 IUJS(IF)	BRG 170.91° / 11.71 NM IUJS	36°58'06.9"N 129°23'14.8"E
D9.0 IUJS(SDF)	BRG 170.91° / 9.00 NM IUJS	36°55'31.8"N 129°24'15.1"E
D5.7 IUJS(FAF)	BRG 170.93° / 5.66 NM IUJS	36°51'46.1"N 129°25'42.7"E
D4.1 IUJS(SDF LOC Only)	BRG 170.95° / 4.10 NM IUJS	36°50'50.7"N 129°26'04.2"E
D2.0 IUJS(MAPt LOC Only)	BRG 170.95° / 2.00 NM IUJS	36°48'50.3"N 129°26'50.9"E
THR RWY 17	Final approach descent angle(LOC ONLY) 3.03°(FAF-SDF) / 3.05°(SDF-THR)	36°47'05.09"N 129°27'31.62"E
UJN VORTAC		36°46'35.2"N 129°27'26.9"E
D5 UJN	R 171 UJN/ 5.00 NM UJN	36°41'52.3"N 129°29'32.6"E
BANYA	R 130 UJN/ 12.00 NM UJN	36°40'12.4"N 129°40'05.8"E

**INSTRUMENT
APPROACH
CHART - ICAO**

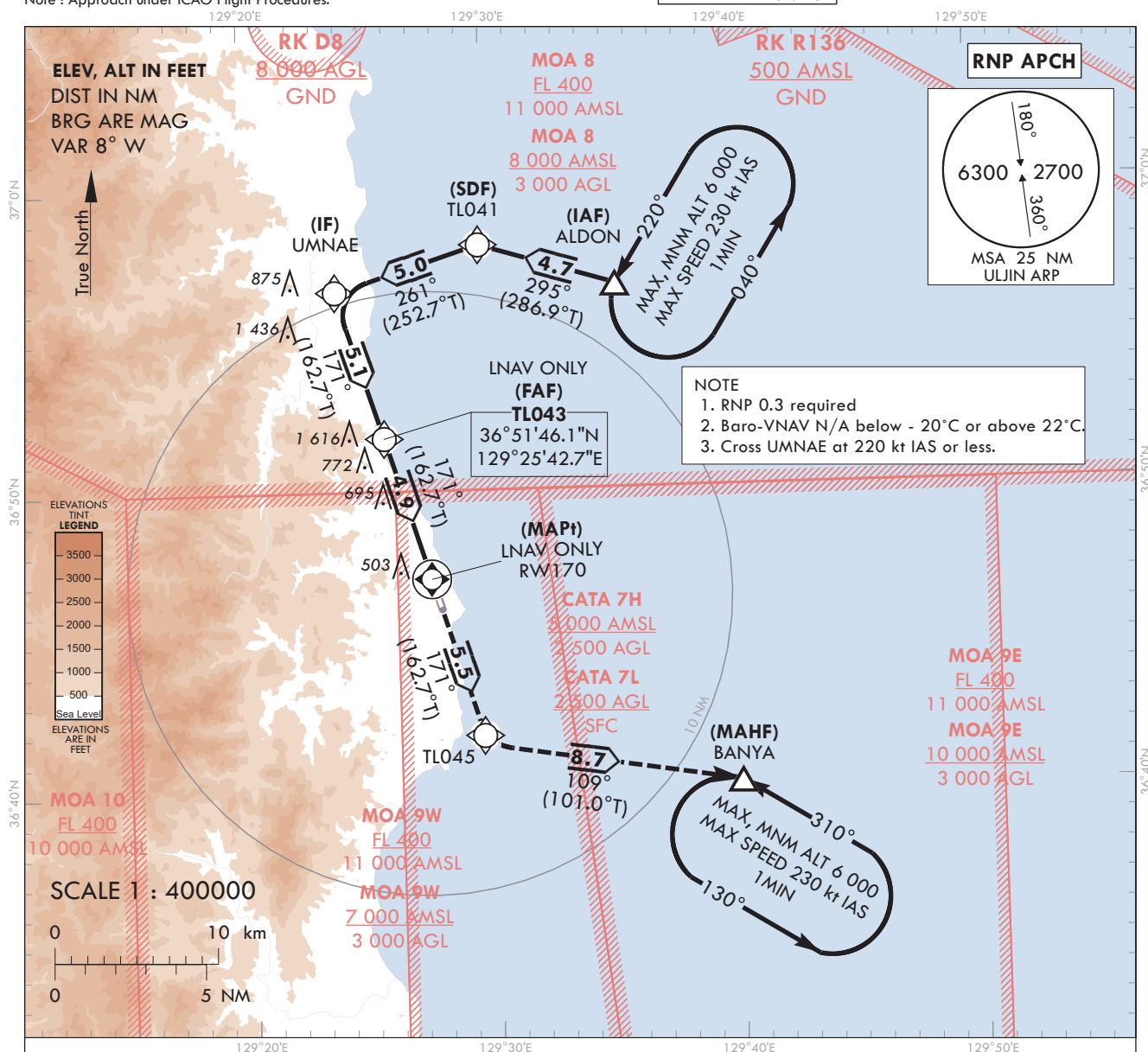
Note : Approach under ICAO Flight Procedures.

AERODROME ELEV 175 ft
HEIGHTS RELATED TO
THR RWY 17 - ELEV 175 ft

ULJIN	ARR	120.875
		317.65
ULJIN	TWR	118.55
		317.45

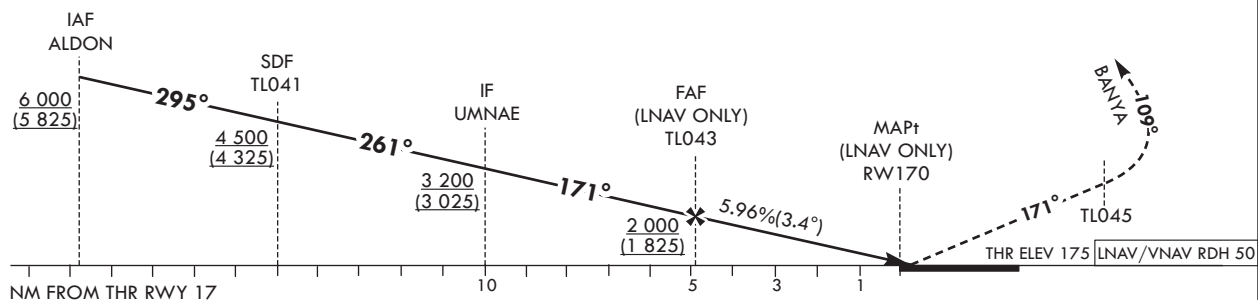
ULJIN/ULjin(RKTL)

RNP RWY 17



MISSED APPROACH

Climb to 6 000 ft on track of 171° to TL045, then turn left on track of 109° to BANYA. Hold as published.



CATEGORY			DA(H)/MDA(H)	A	B	C	D							
STA	LNAV/ VNAV	FULL	690	2 000 m				Rate of descent	Knots	60	90	120	150	180
		ALS INOP	(515)	2 400 m					V/V fpm	362	543	725	906	1 087
	LNAV	FULL	960	3 200 m					* Timing NOT authorized for defining the MAPt.					
		ALS INOP	(785)	3 600 m										

Change : Improved clarity such as terrain.

AERONAUTICAL DATA TABULATION

Instrument approach Procedure Coding Tables

RNP RWY 17 - via ALDON(IAF)

Serial Number	Path Descriptor	Waypoint Identifier	Fly-over	Course/Track °M(°T)	Distance (NM)	Turn direction	Altitude (ft)	Speed (kt)	Coordinates	VPA/ TCH	Navigation specification	Remarks
001	IF	ALDON	-	-	-	-	+6 000	-	36°56'46.3"N 129°35'23.0"E	-	RNP APCH	IAF
002	TF	TL041	-	295(286.9)	4.7	-	+4 500	-	36°58'07.9"N 129°29'46.5"E	-	RNP APCH	SDF
003	TF	UMNAE	-	261(252.7)	5.0	-	+3 200	-	36°56'38.6"N 129°23'49.1"E	-	RNP APCH	IF
004	TF	TL043	-	171(162.7)	5.1	-	+2 000	-	36°51'46.1"N 129°25'42.7"E	-	RNP APCH	FAF
005	TF	RW170	Y	171(162.7)	4.9	-	+960	-	36°47'05.09"N 129°27'31.62"E	-3.41/50	RNP APCH	MAPt
006	TF	TL045	-	171(162.7)	5.5	-	-	-	36°41'52.3"N 129°29'32.6"E	-	RNP APCH	-
007	HM	BANYA	-	109(101.0)	8.7	-	@6 000	-	36°40'12.4"N 129°40'05.8"E	-	RNP APCH	¹ MIN (outbound timing)

**INSTRUMENT
APPROACH
CHART - ICAO**

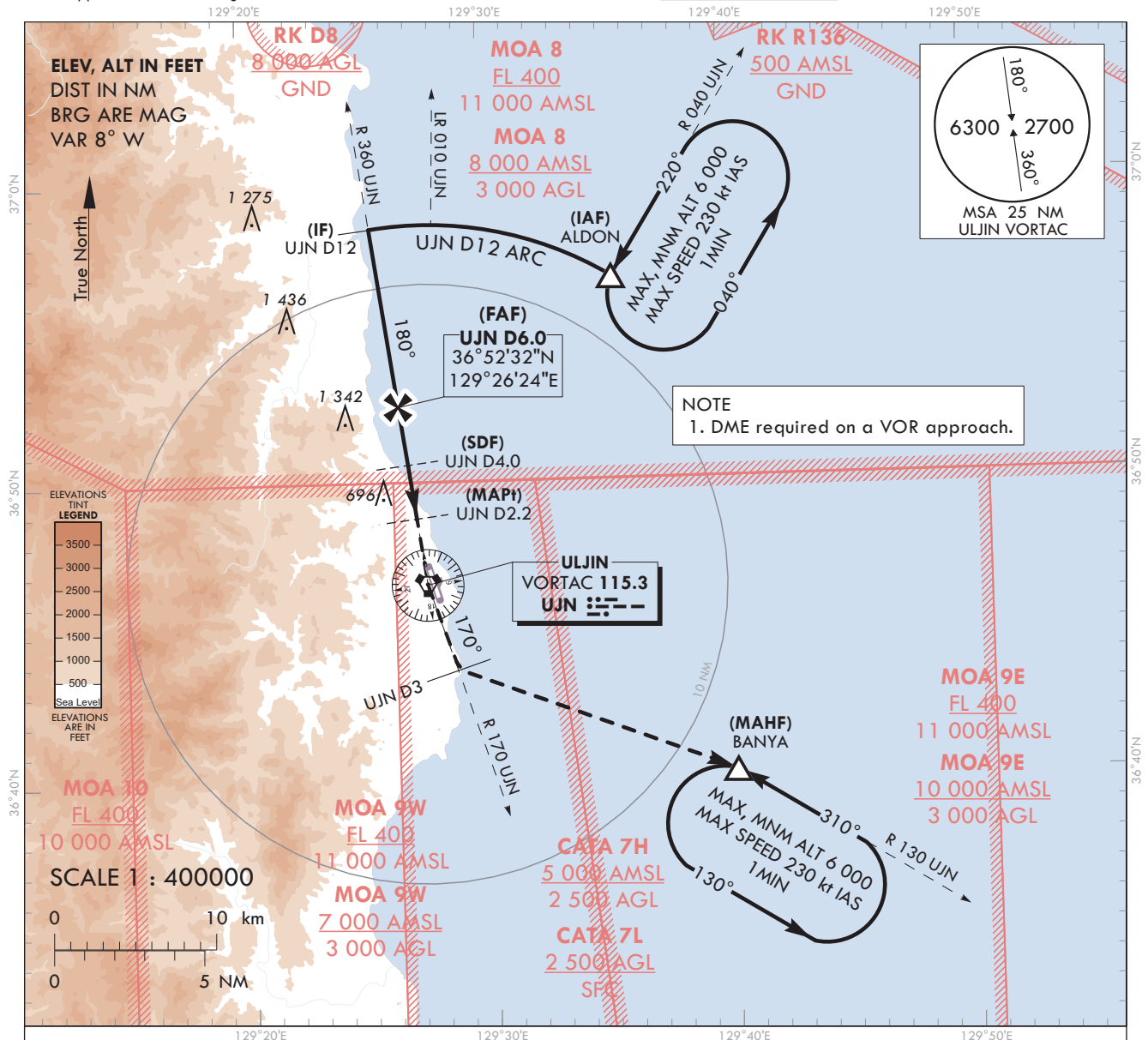
Note : Approach under ICAO Flight Procedures.

AERODROME ELEV 175 ft
HEIGHTS RELATED TO
THR RWY 17 - ELEV 175 ft

ULJIN	ARR	120.875
		317.65
ULJIN	TWR	118.55
		317.45

ULJIN/ULjin(RKTL)

VOR RWY 17

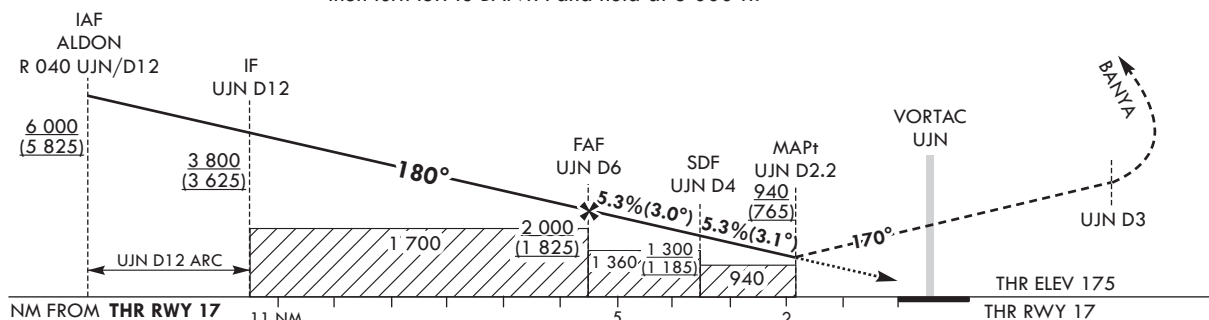


TRANSITION ALT	14 000
TRANSITION LVL	FL 140

RECOMMENDED PROFILE(LOC ONLY)	DME UJN	5	4	3	2.5
Final Approach Gradient 5.30%, 323 ft/NM	ALT(HGT)	1 680 (1 505)	1 360 (1 184)	1 034 (859)	879 (704)

MISSED APPROACH

Climb on R 360 UJN to UJN and R 170 UJN to 3 DME,
then turn left to BANYA and hold at 6 000 ft.



							Knots	60	90	120	150	180	
CATEGORY		MDA(H)	A	B	C	D	Rate of descent	V/V fpm	323	485	646	808	970
STA	FULL	940 (765)	3 200 m					* Timing NOT authorized for defining the MAPt.					
	ALS INOP		3 600 m					* Circling not authorized.					

Change : Improved clarity such as terrain.

ULJIN/Uijin(RKTL)
VOR RWY 17

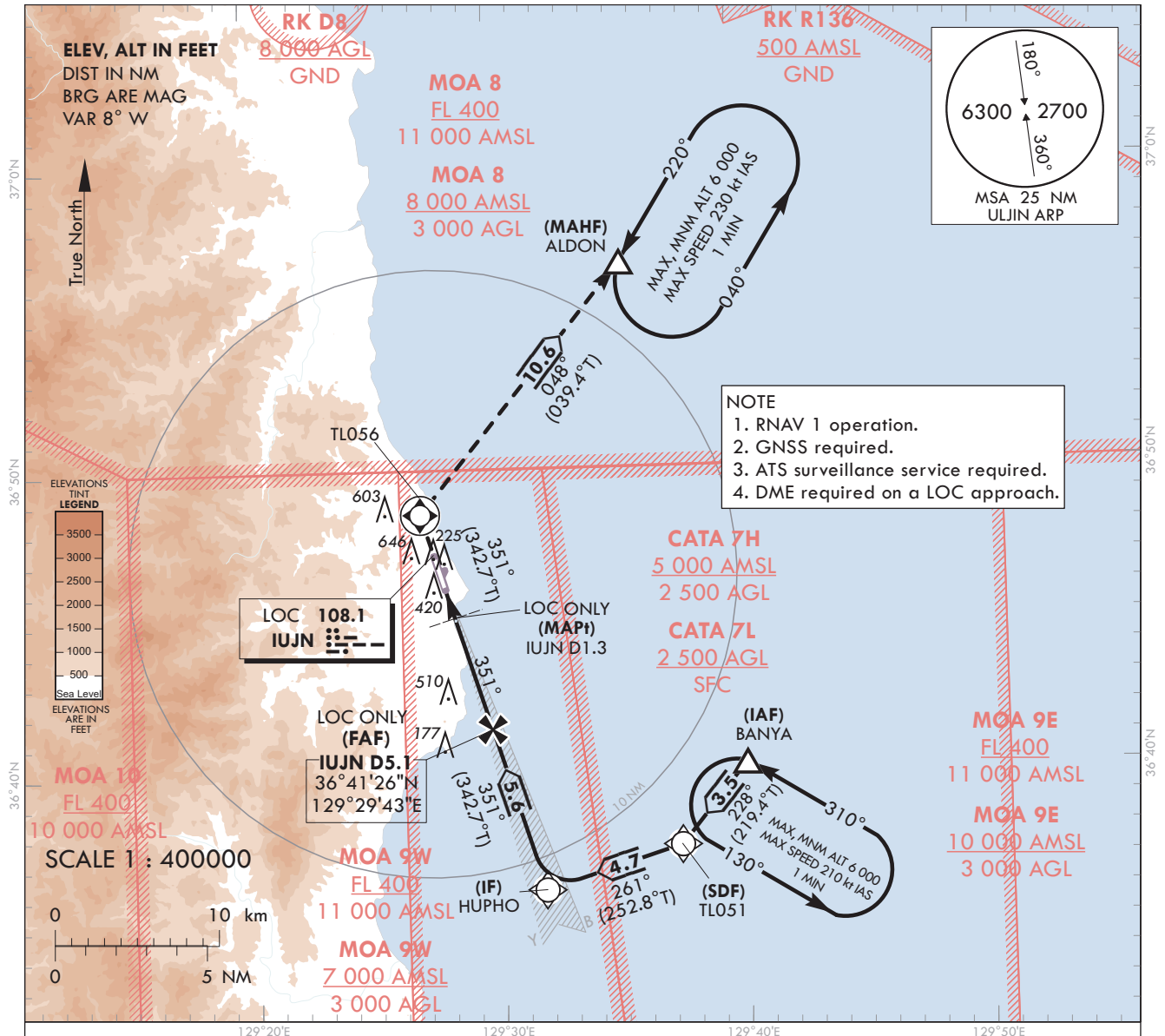
AERONAUTICAL DATA TABULATION

VOR Approach to RWY 17 from ALDON(IAF)		
	Fix/Point	Coordinates
ALDON(IAF)	R 040 UJN/ 12.00 NM UJN	36°56'46.3"N 129°35'23.0"E
D12.0 UJN(IF)	BRG 180.27° / 12.00 NM UJN	36°58'28.9"N 129°25'22.0"E
D6.0 UJN(FAF)	BRG 180.27° / 6.00 NM UJN	36°52'32.1"N 129°26'24.4"E
D4.0 UJN(SDF)	BRG 180.27° / 4.00 NM UJN	36°50'33.0"N 129°26'45.4"E
D2.2 UJN(MAPt)	BRG 180.27° / 2.20 NM UJN	36°48'45.7"N 129°27'04.1"E
THR RWY 17	Final approach descent angle 3.01°(FAF-SDF) / 3.06°(SDF-THR)	36°47'05.09"N 129°27'31.62"E
UJN VORTAC		36°46'35.2"N 129°27'26.9"E
D3 UJN	R 170 UJN/ 3.00 NM UJN	36°43'44.4"N 129°28'38.6"E
BANYA	R 130 UJN/ 12.00 NM UJN	36°40'12.4"N 129°40'05.8"E

ULJIN	ARR	120.875
		317.65
ULJIN	TWR	118.55
		317.45

ILS Z or LOC Z RWY 35

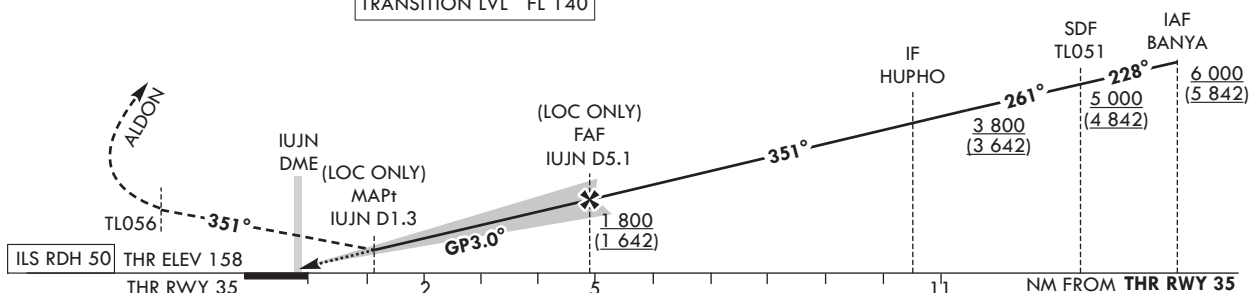
129°20'E 129°30'E 129°40'E 129°50'E



RECOMMENDED PROFILE(LOC ONLY)	DME IUJN	5	4	3	2	1.3
Final Approach Gradient 5.31%, 323 ft/NM	ALT(HGT)	1 774 (1 616)	1 451 (1 293)	1 128 (970)	805 (647)	579 (421)

Climb straight ahead until TL056,
then turn right on track of 048° to ALDON
and hold at 6 000 ft.

TRANSITION ALT	14 000
TRANSITION LVL	FL 140



CATEGORY			DA(H)/MDA(H)	A	B	C	D							
STA	CAT-1 (CG 2.5%)	FULL	511	1 100 m				Knots	60	90	120	150	180	
		ALS INOP	(353)	1 800 m										
	CAT-1 (CG 4.0%)	FULL	391	RVR 550 m, VIS 800 m			Rate of descent	V/V fpm	322	483	644	805	966	
		ALS INOP	(233)	1 200 m										
	LOC	FULL	580	1 500 m			* Timing NOT authorized for defining the MAPt.							
		ALS INOP	(422)	2 200 m			* Circling not authorized.							

OFFICE OF CIVIL AVIATION

AIP AMDT 13/22

ULJIN/Uijin(RKTL)
ILS Z or LOC Z RWY 35

AERONAUTICAL DATA TABULATION

ILS Z / LOC Z Approach to RWY 35 from BANYA(IAF)		
	Fix/Point	Coordinates
BANYA(IAF)	R 130 UJN/12.00 NM UJN	36°40'12.4"N 129°40'05.8"E
TL051(SDF)	BRG 261.04°	36°37'30.8"N 129°37'21.1"E
HUPHO(IF)	BRG 350.99°/10.65 NM UJN	36°36'07.0"N 129°31'45.8"E
D5.1 IUJN(FAF)	BRG 350.97°/5.08 NM IUJN	36°41'26.4"N 129°29'42.5"E
D1.3 IUJN (MAPt LOC Only)	BRG 350.95°/1.30 NM IUJN	36°45'03.3"N 129°28'18.7"E
THR RWY 35	Final approach descent angle 3.04°(LOC ONLY)	36°46'09.33"N 129°27'53.20"E
UJN VORTAC		36°46'35.2"N 129°27'26.9"E
TL056		36°48'33.0"N 129°26'57.6"E
ALDON		36°56'46.3"N 129°35'23.0"E

**INSTRUMENT
APPROACH
CHART - ICAO**

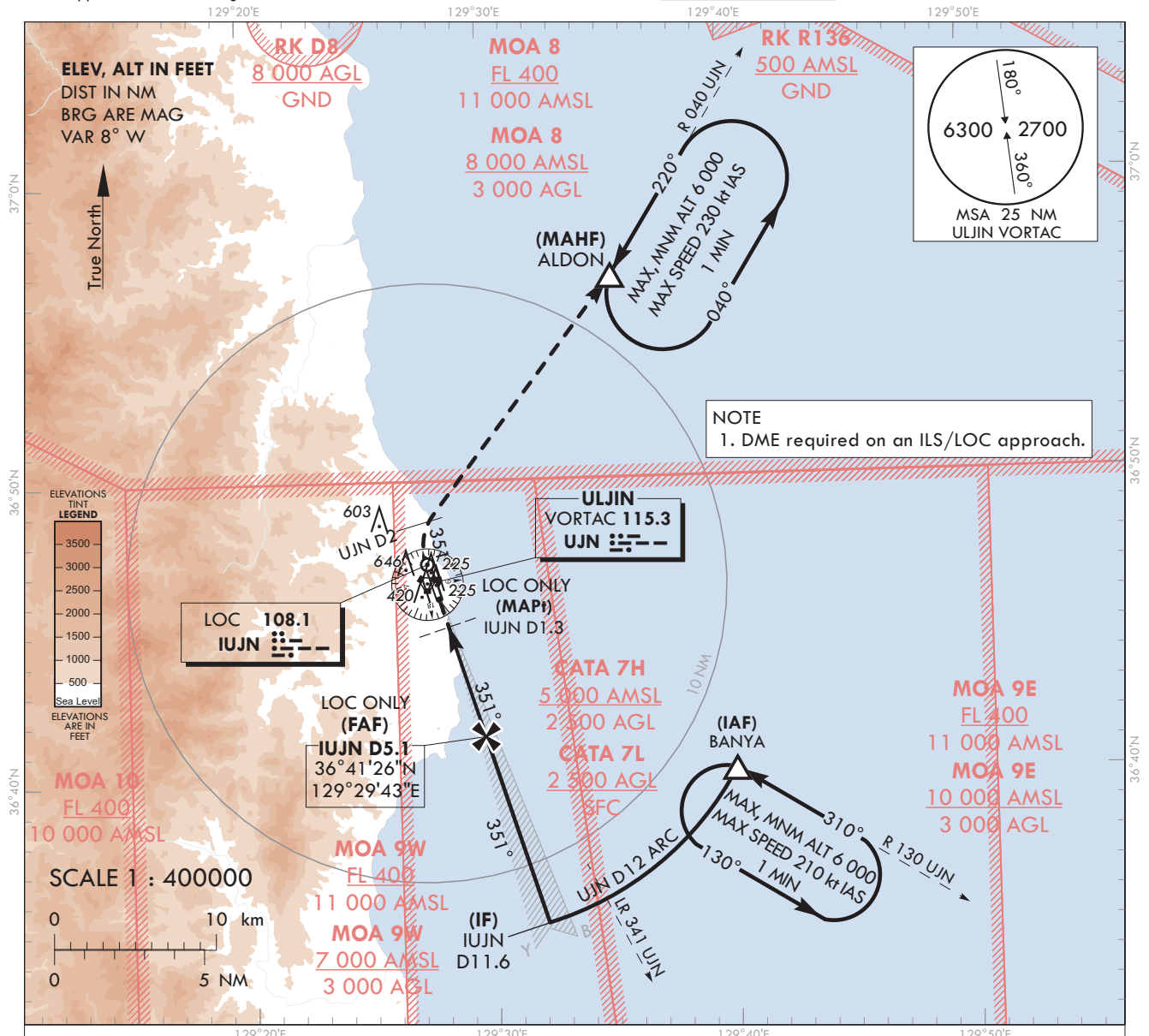
Note : Approach under ICAO Flight Procedures.

AERODROME ELEV 175 ft
HEIGHTS RELATED TO
THR RWY 35 - ELEV 158 ft

ULJIN	ARR	120.875
		317.65
ULJIN	TWR	118.55
		317.45

ULJIN/ULjin(RKTL)

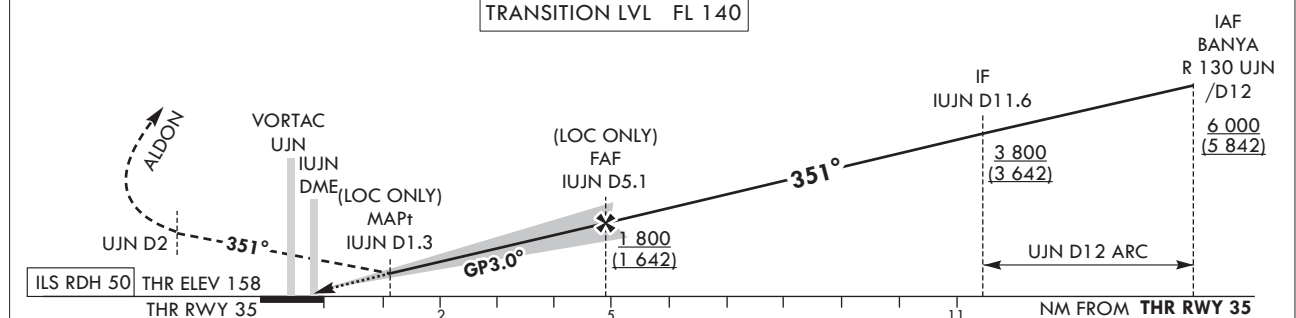
ILS Y or LOC Y RWY 35



RECOMMENDED PROFILE(LOC ONLY)	DME IUJN	5	4	3	2	1.3
Final Approach Gradient 5.31%, 323 ft/NM	ALT(HGT)	1 774 (1 616)	1 451 (1 293)	1 128 (970)	805 (647)	579 (421)

MISSED APPROACH
Climb straight ahead until
IUJN D2, then turn right to
ALDON and hold at 6 000 ft.

TRANSITION ALT 14 000
TRANSITION LVL FL 140



CATEGORY			DA(H)/MDA(H)	A	B	C	D													
STA	CAT-1 (CG 2.5%)	FULL	511	1 100 m				Rate of descent	Knots V/V fpm	60	90	120	150	180						
		ALS INOP	(353)	1 800 m																
	CAT-1 (CG 4.0%)	FULL	391	RVR 550 m, VIS 800 m																
		ALS INOP	(233)	1 200 m																
	LOC	FULL	580	1 500 m											* Timing NOT authorized for defining the MAPt.					
		ALS INOP	(422)	2 200 m											* Circling NOT authorized.					

Change : Improved clarity such as terrain.

ULJIN/Uijin(RKTL)
ILS Y or LOC Y RWY 35

AERONAUTICAL DATA TABULATION

ILS Y / LOC Y Approach to RWY 35 from BANYA(IAF)		
	Fix/Point	Coordinates
BANYA(IAF)	R 130 UJN/12.00 NM UJN	36°40'12.4"N 129°40'05.8"E
D11.6 IUJN(IF)	BRG 350.99°/11.63 NM IUJN	36°35'10.5"N 129°32'07.5"E
D5.1 IUJN(FAF)	BRG 350.97°/5.08 NM IUJN	36°41'26.4"N 129°29'42.5"E
D1.3 IUJN(MAPt LOC Only)	BRG 350.95°/1.30 NM IUJN	36°45'03.3"N 129°28'18.7"E
THR RWY 35	Final approach descent angle 3.04°(LOC ONLY)	36°46'09.33"N 129°27'53.20"E
UJN VORTAC		36°46'35.2"N 129°27'26.9"E
D2 UJN	R 351 UJN/2.00 NM UJN	36°48'33.0"N 129°26'57.6"E
ALDON	R 040 UJN/12.00 NM UJN	36°56'46.3"N 129°35'23.0"E

**INSTRUMENT
APPROACH
CHART - ICAO**

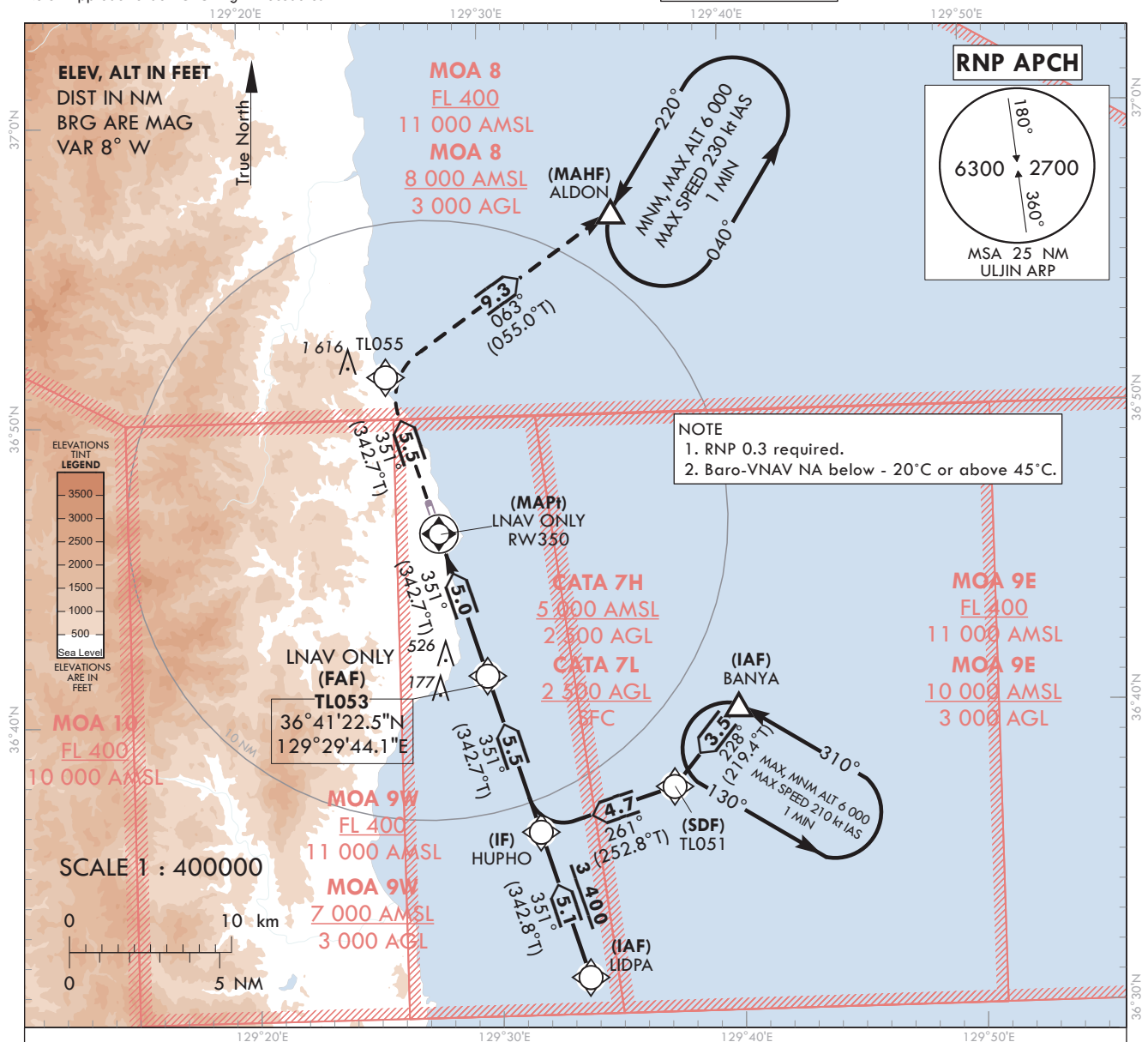
Note : Approach under ICAO Flight Procedures.

AERODROME ELEV 175 ft
HEIGHTS RELATED TO
THR RWY 35 - ELEV 158 ft

ULJIN	ARR	120.875
		317.65
ULJIN	TWR	118.55
		317.45

ULJIN/ULjin(RKTL)

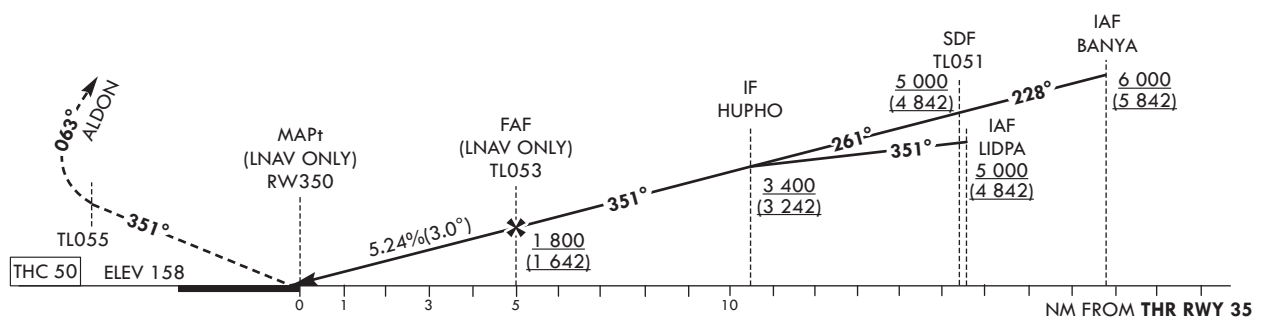
RNP RWY 35



MISSED APPROACH

Climb to 6 000 ft on track of 351° to TL055, then turn right on track of 063° to ALDON. Hold as published.

TRANSITION ALT 14 000
TRANSITION LVL FL 140



CATEGORY			DA(H)/MDA(H)	A	B	C	D		Knots	60	90	120	150	180
STA	LNAV/ VNAV	FULL	700	2 200 m				Rate of descent	V/V fpm	318	478	637	796	955
		ALS INOP	(542)	2 900 m										
	LNAV (CG3.0%)	FULL	760	2 100 m				* Timing NOT authorized for defining the MAPt.						
		ALS INOP	(602)	2 800 m				* Circling not authorized.						

Change : Improved clarity such as terrain

AERONAUTICAL DATA TABULATION

Instrument approach Procedure Coding Tables

RNP RWY 35 - via BANYA(IAF)

Serial Number	Path Descriptor	Waypoint Identifier	Fly-over	Course/Track °M(°T)	Distance (NM)	Turn direction	Altitude (ft)	Speed (kt)	Coordinates	VPA/ TCH	Navigation specification	Remarks
001	IF	BANYA	-	-	-	-	+6 000	-	36°40'12.4"N 129°40'05.8"E	-	RNP APCH	IAF
002	TF	TL051	-	228(219.4)	3.5	-	+5 000	-	36°37'30.8"N 129°37'21.1"E	-	RNP APCH	SDF
003	TF	HUPHO	-	261(252.8)	4.7	-	+3 400	-	36°36'07.0"N 129°31'45.8"E	-	RNP APCH	IF
004	TF	TL053	-	351(342.7)	5.5	-	+1 800	-	36°41'22.5"N 129°29'44.1"E	-	RNP APCH	FAF
005	TF	RW350	Y	351(342.7)	5.0	-	+930	-	36°46'09.33"N 129°27'53.20"E	-3.0/50	RNP APCH	MAPt
006	TF	TL055	-	351(342.7)	5.5	-	-	-	36°51'25.4"N 129°25'50.7"E	-	RNP APCH	-
007	HM	ALDON	-	063(055.0)	9.3	-	@6 000	-	36°56'46.3"N 129°35'23.0"E	-	RNP APCH	¹ MIN (outbound timing)

RNP RWY 35 - via LIDPA(IAF)

Serial Number	Path Descriptor	Waypoint Identifier	Fly-over	Course/Track °M(°T)	Distance (NM)	Turn direction	Altitude (ft)	Speed (kt)	Coordinates	VPA/ TCH	Navigation specification	Remarks
001	IF	LIDPA	-	-	-	-	+5 000	-	36°31'13.6"N 129°33'38.6"E	-	RNP APCH	IAF
002	TF	HUPHO	-	351(342.8)	5.1	-	+3 400	-	36°36'07.0"N 129°31'45.8"E	-	RNP APCH	IF
003	TF	TL053	-	351(342.7)	5.5	-	+1 800	-	36°41'22.5"N 129°29'44.1"E	-	RNP APCH	FAF
004	TF	RW350	Y	351(342.7)	5.0	-	+930	-	36°46'09.33"N 129°27'53.20"E	-3.0/50	RNP APCH	MAPt
005	TF	TL055	-	351(342.7)	5.5	-	-	-	36°51'25.4"N 129°25'50.7"E	-	RNP APCH	-
006	HM	ALDON	-	063(055.0)	9.3	-	@6 000	-	36°56'46.3"N 129°35'23.0"E	-	RNP APCH	¹ MIN (outbound timing)

**INSTRUMENT
APPROACH
CHART - ICAO**

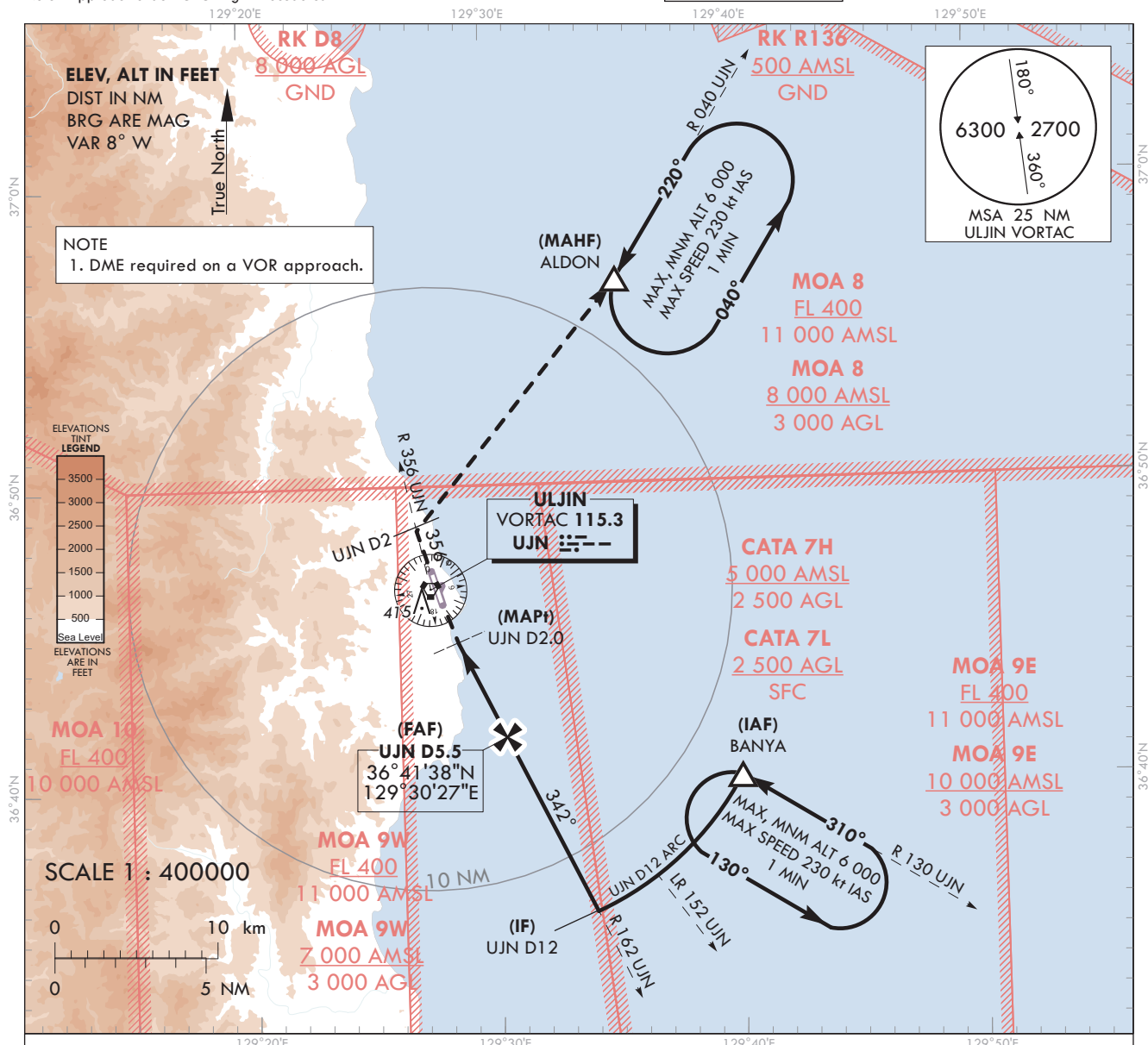
Note : Approach under ICAO Flight Procedures.

AERODROME ELEV 175 ft
HEIGHTS RELATED TO
THR RWY 35 - ELEV 158 ft

ULJIN	ARR	120.875
		317.65
ULJIN	TWR	118.55
		317.45

ULJIN/ULjin(RKTL)

VOR RWY 35

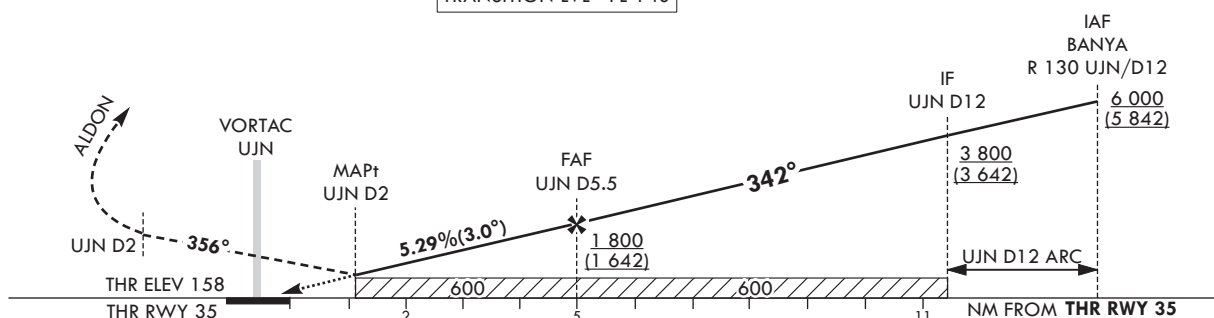


MISSED APPROACH

Climb on R 162 UJN to UJN and R 356 UJN to 2 DME, then turn right to ALDON and hold at 6 000 ft.

RECOMMENDED PROFILE	DME UJN	5	4	3	2
Final Approach Gradient 5.29%, 322 ft/NM	ALT(HGT)	1 639 (1 481)	1 317 (1 159)	995 (873)	673 (515)

TRANSITION ALT 14 000
TRANSITION LVL FL 140



							Knots	60	90	120	150	180	
CATEGORY		MDA(H)	A	B	C	D	Rate of descent	V/V fpm	322	483	644	805	966
STA	FULL	600 (442)	2 000 m					* Timing NOT authorized for defining the MAPt.					
	2 700 m												
	ALS INOP								* Circling not authorized.				

Change : Improved clarity such as terrain.

ULJIN/Uijin(RKTL)
VOR RWY 35

AERONAUTICAL DATA TABULATION

VOR Approach to RWY 35 from BANYA(IAF)		
	Fix/Point	Coordinates
BANYA(IAF)	R 130 UJN/12.00 NM UJN	36°40'12.4"N 129°40'05.8"E
D12.0 UJN(IF)	BRG 342.27°/12.00 NM UJN	36°35'46.8"N 129°33'59.3"E
D5.5 UJN(FAF)	BRG 342.27°/6.30 NM UJN	36°41'38.1"N 129°30'26.8"E
D2.0 UJN(MAPt)	BRG 342.27°/2.40 NM UJN	36°44'47.2"N 129°28'32.4"E
THR RWY 35	Final approach descent angle 3.03°	36°46'09.33"N 129°27'53.20"E
UJN VORTAC		36°46'35.2"N 129°27'26.9"E
D2 UJN	R 356 UJN/2.00 NM UJN	36°48'32.7"N 129°26'55.9"E
ALDON	R 040 UJN/12.00 NM UJN	36°56'46.3"N 129°35'23.0"E